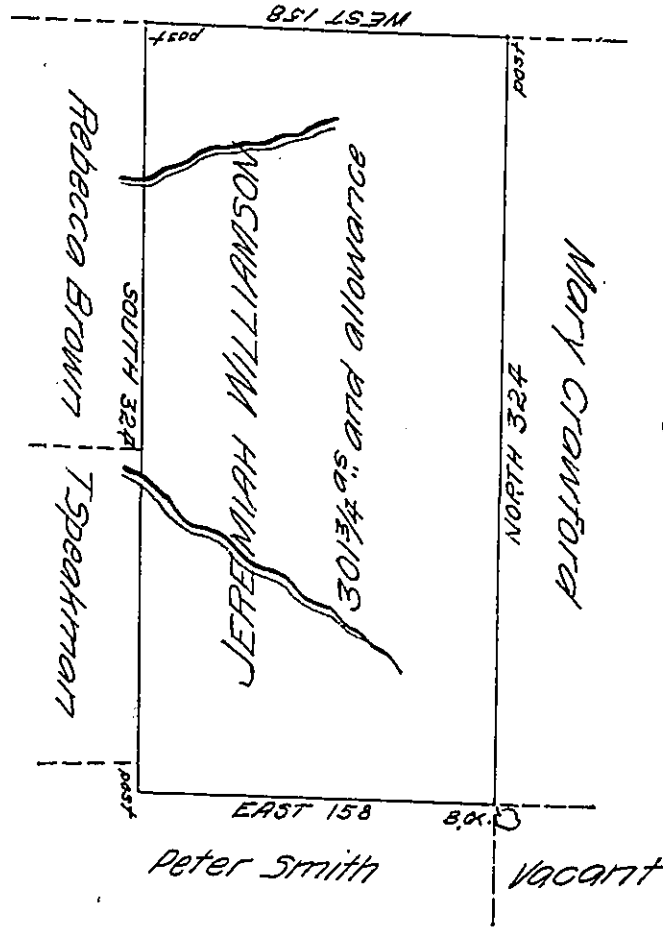


A. 4<sup>th</sup> 13<sup>th</sup>

Vacant



C. v. 291

A. 91

C. 13

A draught of a tract of land called the Stock Farms situate on a branch of a run which empties into the southerly side of the west branch of Susquehanna about a mile up said run & about eight below the Canoe Place adjoining land of Peter Smith Mary Crawford & others in the County of Bedford containing three hundred <sup>& 1/4</sup> acres & the usual allowance of six P cent for roads &c.

Surveyed the 17<sup>th</sup> day of November 1775 for Jeremiah Williamson in pursuance of a warrant dated the 3<sup>d</sup> day of August 1773 by  
 To John Lukens Esq. }  
 Surveyor General } Thomas Smith D.S.

IN TESTIMONY that the above is a copy of the original remaining on file in the Department of Internal Affairs of Pennsylvania, made conformably to an Act of Assembly approved the 16th day of February 1833, I have hereunto set my hand and caused the Seal of said Department to be affixed at Harrisburg, this twenty first day of May 1907

*Henry Howell*  
 Secretary of Internal Affairs.